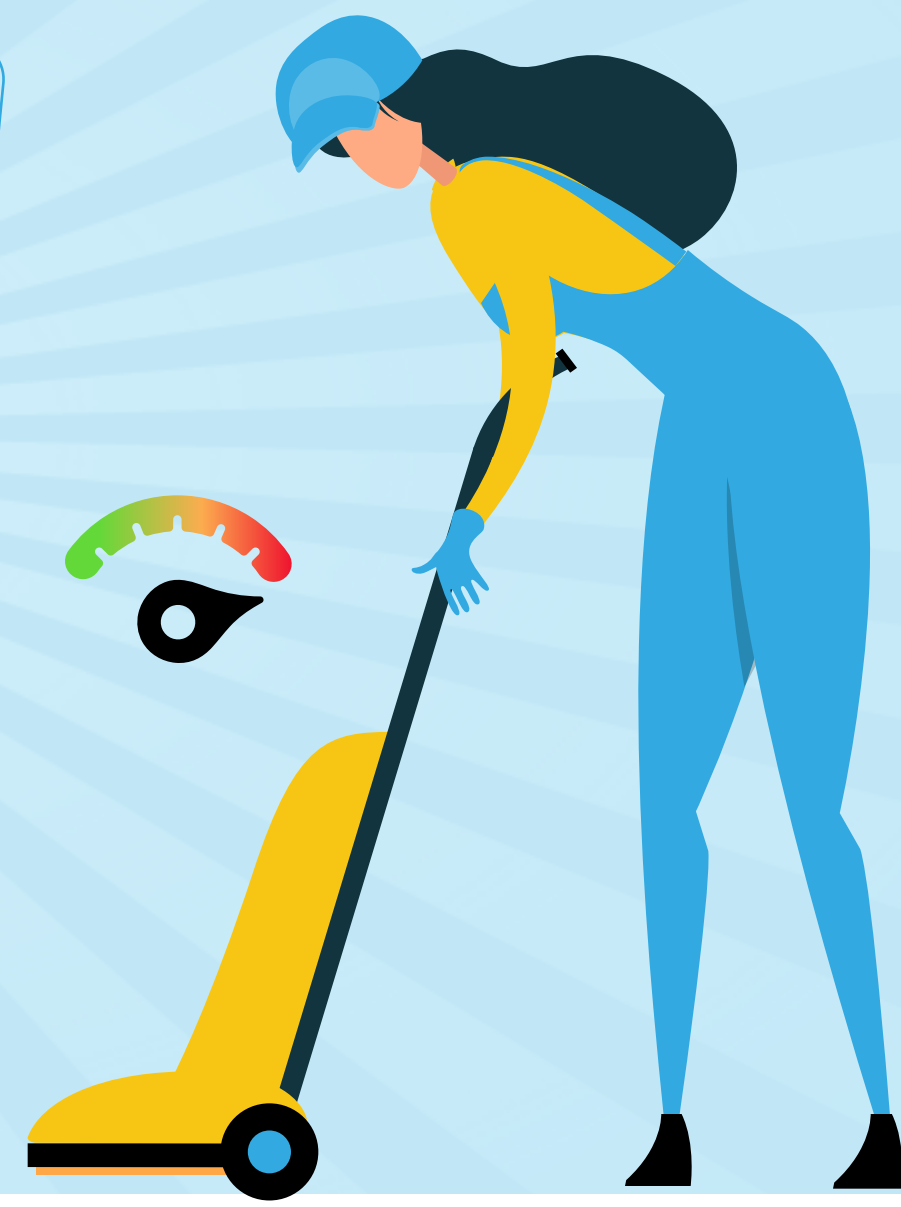


5 BIG MISTAKES THAT WILL BREAK YOUR VACUUM CLEANER



RUNNING OVER THE CORD

Let the vacuum cord out of the way!
You can peel the cable open and
make it unsafe to use.



CLEANING WHEN OVERFILLED

Don't overwork your vacuum
cleaner if it's full. Remember to
empty it constantly, so you never
lose vacuuming power.



THINKING THAT IT'S BROKEN

If the vacuum cleaner doesn't turn on,
check for anything stuck or a reset
function; the fix might be that easy.



TRYING TO CLEAN UP SPILLS

You've been lucky if you've gotten away
with this. Liquids ruin the motor and can
cause an electric shock!



PICKING UP SMALL OBJECTS

Avoid messing up the motor. If you see
a coin or a screw lying on the floor, pick
it up with your hand.



SWEEPINGHANDS
CLEANING SERVICE, LLC